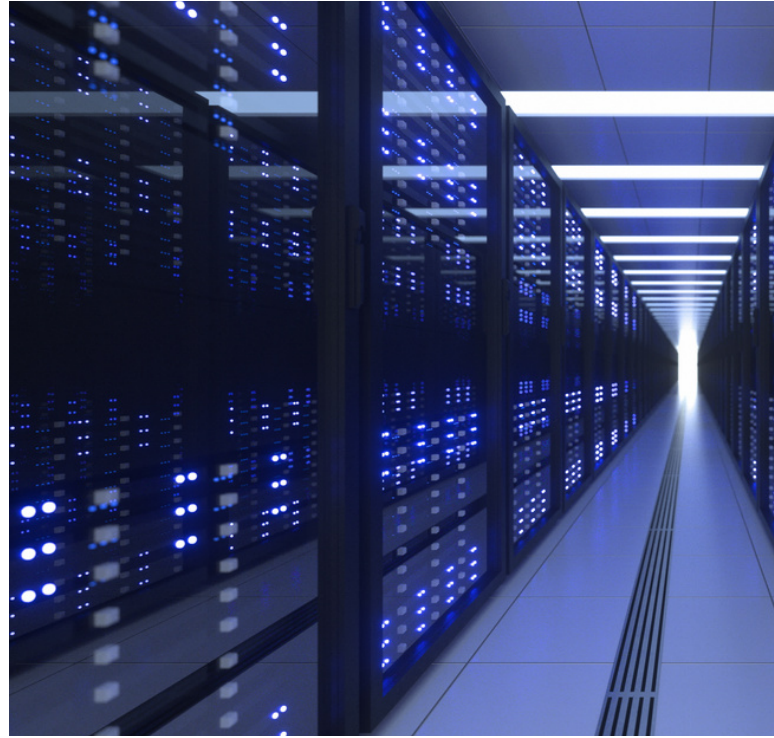


# LynxGuide Server Software 5,000 Seats

SKU #780-LYNXS-SW-05



The LynxGuide standard server software is installed on the customer's supplied server. The 5,000 seat package includes 10 LynxMessengerPro licenses and 200 LynxKeyPro licenses. Each client software function is counted as one server seat. One computer with LynxClient installed can use 1-5 server seats, depending on what LynxClient functions are enabled. Any LynxNet device is counted as one server seat. LynxGuide Standard software licensing allows for a server to operate on a LAN covering a single campus or facility, (including remote offices with less than 100 PCs within the county).



## Features and Benefits

- On Prem software only (expandable)
- 5,000 server seats for LynxClient software functions and LynxNet hardware
- Enables integration with Lynx hardware input and output devices

### GENERAL:

**Applications:** The LynxGuide server application is the foundation of the Lynx System. It is required for all on-prem deployments.

**Minimum HDD Size:** 120GB

**Minimum CPU Cores:** 6

**Minimum RAM:** 16GB

**OS:** Windows Server 2022 Standard or higher

### NETWORK SPECIFICATIONS:

**Supervision Interval:** Default 5 minutes

**Communication Protocol:** Server ingress TCP ports required: 80 or 443, 10114 - 10121

