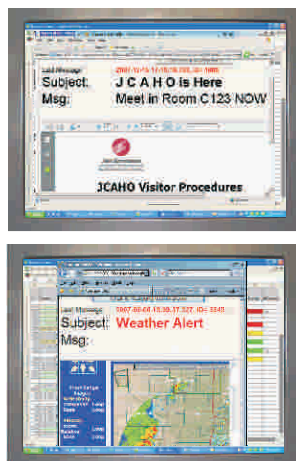
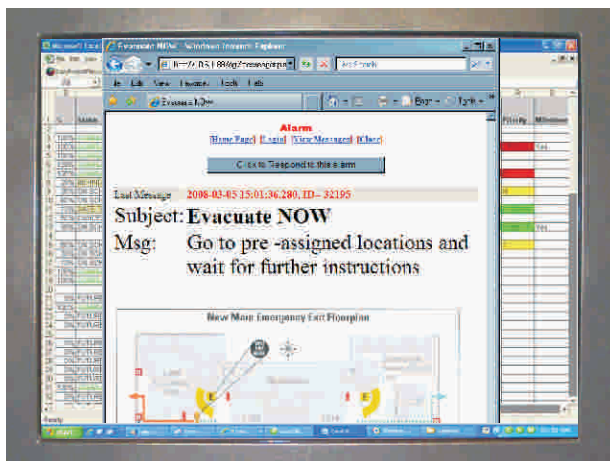


LynxMessenger

PC Notification Client Software (included with LynxGuide Server)



Input Devices



LynxMessenger "Pop-up" alerts users by appearing on recipient's PC screens over other programs. Include within the "Pop-up" message alert are specific event text, maps, images, IP camera, PDF documents or live links to web sites such as weather.

Features

- Include JPG, BMP, PNG, GIF images
- Attach Documents:
PDF files
Word documents
Excel spreadsheets
- LynxGuide server includes Client Software
- Include live web sites for weather alerts or live video from IP Cameras
- Alarms can be configured to allow recipient to respond to log, acknowledgment of receipt
- Log files record all alarms and responses

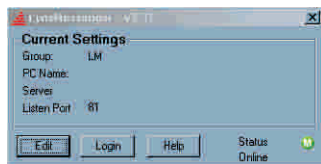
The **LynxMessenger** client software is a simple-to-use instant messaging program. The LynxMessenger client software simply needs to be loaded on any Windows-based PC (individually or using an MSI push). Alerts can be sent to individuals or groups for notification of specific issues. The PC can receive instant alerts from any Lynx system input device, including LynxKey Hot Keys software, LynxComPro hardwired USB panic buttons, LynxNet256 wireless panic button receiver, and the LynxNetHW hardwired input devices. LynxMessenger will work on any PC that can reach the LynxGuide server inside your network (does not go through Fire walls).

The standard LynxGuide Server supports up to 2000 clients. The LynxGuidePro Server supports up to 5000 clients. LynxMessenger client software is included with the purchase of the LynxGuide Server.

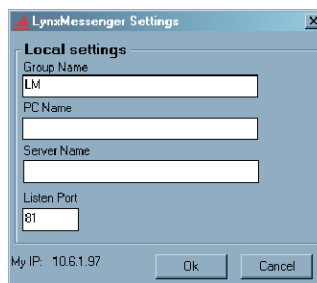
Ordering Information

LynxMessenger Client Software included with purchase of LynxGuide Server

LynxMessenger Status Screen



LynxMessenger Settings Screen



System Tray Icon

