



LynxGuide Server

Web Server



*Available in
Dell or HP*



Panic Button



Facility wide
Emergency

Optional LYNX devices:

Inputs

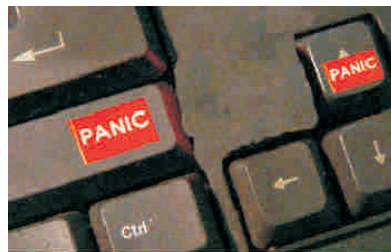
- **LynxKeyPro**- Software panic buttons that operates when PC is on or logged off
- **LynxUSB**- Hardwired USB panic buttons that operates when PC is on or logged off
- **LynxNet256**- Wireless panic buttons and alarm devices
- **LynxNet4iO**- Connect to existing alarm inputs or output to control devices
- **LynxNet128i**- Connect up 128 hardwired alarm inputs

Outputs

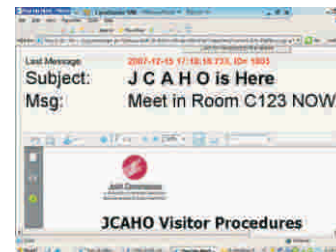
- **LynxNetPA**- Output audio files or text-to-speech files to PA systems
- **LynxNetStrobe**- Activate colored strobes via your network Red, Yellow, Green, Blue
- **LynxDispatcher**- Output radio broadcast voice alarms to existing radios
- **Lynx Voice Plan**- Dial and text-to-speech alarms to telephones

The **LynxGuide** System Server is a turn-key server with the LynxGuide software pre-loaded on a Dell server or a Hewlett Packard server, configured and tested for quick installation of the system. The standard configuration allows up to 2000 client seats and the Pro configuration allows up to 5000 client seats. Each PC client software installation of the LynxMessenger, LynxKey or LynxKeyPro is counted as a client seat. Desktop Icons are unlimited because they are not supervised. Any LynxNet appliance, such as LynxStrobe, Lynx256, LynxPA or LynxDispatcher, also counts as one client seat per device. The Standard and Pro series allow for sizing of the LynxGuide server to meet your facilities needs. LynxGuide software license allows for the server to operate on a facilities LAN covering multiple buildings and remote offices. Separate facilities require a LynxGuide server per facility.

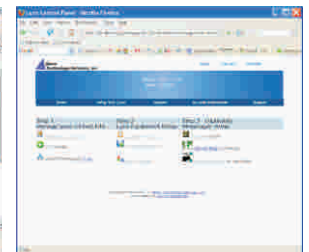
All output messages are set up over the Internet or your internal network, so there is no need to drive or walk to a control panel. Messages can be altered, added or deleted easily via your web browser. Multi-User access is allowed, and you can have as many accounts as you want. You can allow any department to manage their own alert messages, and you can manage your own messages, all using the same triggering device.



Key board panic buttons are discreet and supervised



The Alarm "Pops Up" appears on top of what ever the person is working on.



Easy to set up controls for alarms and devices

LynxGuide Standard Series Server configurations - 2000 Client seats

LynxGuide Dell PowerEdge 1950 Server



950-LYNX-G-DR-0

LynxGuide HP ProLiant DL360 Server



950-LYNX-G-HR-0

LynxGuide Pro Series Server configurations - 5000 Client seats

LynxGuide Dell PowerEdge 2950 Server



950-LYNX-G-DR-1

LynxGuide HP ProLiant DL380 Server



950-LYNX-G-HR-1

| Part Number | 950-LYNX-G-DR-0 | 950-LYNX-G-HR-0 | 950-LYNX-G-DR-1 | 950-LYNX-G-HR-1 |
|--------------------|-----------------------|-----------------------|-------------------------|-------------------------|
| Lynx Server Series | Standard | Standard | Pro | Pro |
| Total Lynx Clients | 2000 seats | 2000 seats | 5000 seats | 5000 seats |
| LynxKeyPro | 100 seats included | 100 seats included | 200 seats included | 200 seats included |
| LynxMessengerPro | 5 seats included | 5 seats included | 10 seats included | 10 seats included |
| Desktop Icons | Unlimited | Unlimited | Unlimited | Unlimited |
| Server Type | Dell PowerEdge 1950 | HP ProLiant DL360 G5 | Dell PowerEdge 2950 | HP ProLiant DL380 G5 |
| Form Factor | 1U - Rack Mountable | 1U - Rack Mountable | 2U - Rack Mountable | 2U - Rack Mountable |
| CPU | Dual-Quad Core | Dual-Quad Core | Dual-Quad Core | Dual-Quad Core |
| CPU Speed | 2.0GHz Intel® Xeon® | 2.0GHz Intel® Xeon® | 2.5GHz Intel® Xeon® | 2.5GHz Intel® Xeon® |
| RAM | 2GB | 2GB | 8GB | 8GB |
| Raid | SAS RAID 1 | SAS RAID 1 | SAS RAID 5 | SAS RAID 5 |
| HDD | Two 73GB 10K RPM | Two 72GB 10K RPM | Three 73GB 15K RPM | Three 72 GB 15K RPM |
| Power Supply | Dual / Redundant | Dual / Redundant | Dual / Redundant | Dual / Redundant |
| Windows OS | 2003 Standard Edition | 2003 Standard Edition | 2003 Enterprise Edition | 2003 Enterprise Edition |
| Warranty | 3 year | 3 year | 3 year | 3 year |
| Technical Support | 1st year included | 1st year included | 1st year included | 1st year included |

Ordering Information

LynxGuide Servers

950-LYNX-G-DR-0

LynxGuide - Dell PowerEdge 1950

950-LYNX-G-HR-0

LynxGuide - HP ProLiant DL360

950-LYNX-G-DR-1

LynxGuide - Dell PowerEdge 2950

950-LYNX-G-HR-1

LynxGuide - HP ProLiant DL380

Options:

950-LYNX-TRN-1D

One day On-site Training

950-LYNX-TRN-2D

Two days On-site Training

950-LYNX-TRN-3D

Three days On-site Training

950-LYNX-SUP-1Y

Additional LYNX Yearly Support and Software Updates



Optional output devices:

950-LYNX-STRB-1 - Red, Yellow, Green, Blue - Ideal for Codes etc. Wall Mountable vertical. Requires Network Connection and Power. The 950-LYNX-STRB-1 is the Master Strobe and can have up to 3 more remote strobes within 100 feet connected to it – ideal for classrooms, lobbies, nurses stations and locations that all need to be activated at the same time.

950-LYNX-PA-0 -The **LynxPA** device outputs line level or up to 1/2 watt audio to you PA system. The LynxGuide server streams wave files or text to speech to the LynxPA when an alarm is activated. A sound card is required to be installed in the LynxGuide server to use the LynxPA. The LynxPA can also be tied into other audio systems that can take a line level audio input such as an Emergency Broadcast system.

950-LYNX-DISP-1 - allows any of your LYNX alarms - software or hardware, to communicate to your existing radio system. The messages can be pre-recorded Wave files or you can use the built-in text to speech feature. Alarms that have been pre-setup can have a message in one of your employees voices key your radios. For applications with variables the alarm subject with the additional message is converted to speech and verbalized through your radio system.