

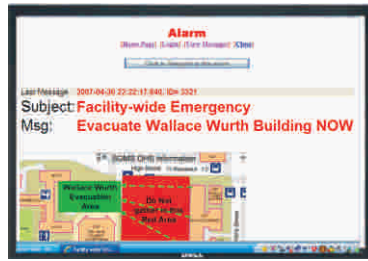
 **Micro
Technology Services, Inc.**

LynxNet128i

Networked Hardwired Input Supervised Device



Output Devices

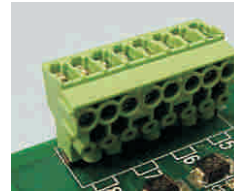


Features

- Ties to existing or new inputs to the LynxGuide Server
- Simple installation - just power, network connection and your inputs
- Dry contact inputs
- Uses Normally Open (N.O.) or Normally Closed (N.C.) inputs
- End of Line (EOL) Supervision for wiring integrity

The LynxNeti series input device is ideal for applications where existing duress systems need updating or large numbers of points need to be monitored. Installed panic buttons and wiring can be used with the LynxNet-IS to allow the alarms to be sent to the LynxGuide system. Alerts sent to the LynxGuide server can activate messages to output devices such as pop up windows on networked computers, strobes, PA or radio systems, text pagers, email, and cell phones.

The LynxNeti series are wall mountable for industrial environments and available in 32, 64, 96 or 128 input models to meet a variety of applications. The LynxNeti series devices can instantly send alerts from any of the 32-128 dry contact closure inputs. Inputs are programmable normally open (N.O.) or normally closed (N.C.). End of Line (EOL) supervision provides connection integrity throughout the installation using EOL resistors. EOL resistor range is 2.2K ohms to 5.1K ohms.



Easy to install, removable input connectors on input PCB with 2 wire connections for each input.

Ordering Information

950-LYNX-32i-1
32 Channel Model

950-LYNX-64i-1
64 Channel Model

950-LYNX-96i-1
96 Channel Model

950-LYNX-128i1
128 Channel Model