

# LynxKey/LynxKeyPro/LynxUSB Test Feature

NEW 2014

## New Features:

1. Employees perform monthly panic button functional test.
2. Employees confirm PC location with simple location updating interface.
3. Import location data via text file on the LynxGuide server.
4. The Lynx Client software can be pushed out to all PCs in a dormant mode.



## LynxKey, LynxKeyPro V10 and LynxUSB Panic Buttons

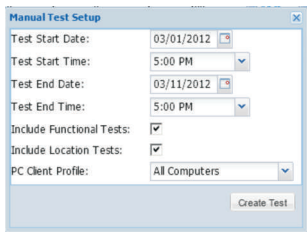
There are now over 20 unique two key combinations available. Moving the two keys to the top of the keyboard reduces false alarms. Such as F9-F11, F1-F12.

An alarm will only occur when only the two keys are pressed together. If more than the two keys are pressed LynxKeyPro will not send out an alarm.

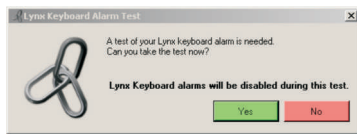
The LynxUSB Panic button has the new test feature for creating reports, training employees and confirming location. It also has supervision to notify the Lynx system if the button is unplugged from the PC.

The Locking version of the USB button has a test feature that can be performed by an officer with the reset key.

1. LynxKey, LynxKeyPro V10 and the Lynx USB panic button allow employees to test the alarm each month as a true test of the two key combination or USB button. When logged in, the employee will be prompted (on your schedule) to test the alarm. The key combination or USB button will be temporarily de-activate while they go through the 30 second test. The PC will show the employee has correctly tested the alarm (or not) and this information will be recorded in the test report. The report will also show any PCs not tested within the test period. **The test feature has the added advantage of training the employee to become more familiar with the panic button and how to activate it.**



Lynx system administrator schedules monthly test



Popup on employee PC asks employee to test Lynx

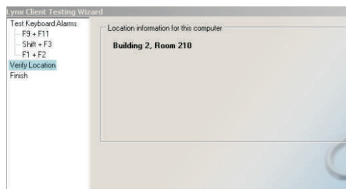


PC screen walks employee through the process

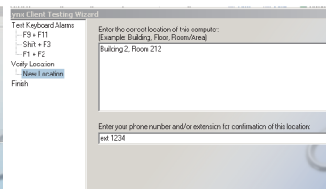


PC screen shows the employee success

2. As part of the test, it will prompt the employee to confirm the PC location. If it incorrect, the employee can enter the correct information and their extension number. Location reports allow the system administrator to verify the location change, format the message and update the location in the Lynx alarm information.



The employee can verify location information for alarms.



Employee can provide correct location information.

**LynxKeyPro Functional Test Report**

Test Start Date	Test End Date	Passed	Failed	Untested	Total	% Complete	Functional	Location	Status
03/01/2012	03/01/2012	0	1	0	1	100	View	View	Stopped
03/01/2012	03/01/2012	0	1	0	1	100	View	View	Stopped
03/01/2012	03/01/2012	0	1	0	1	100	View	View	Completed
03/01/2012	03/01/2012	0	0	1	1	0	View	View	Completed
03/01/2012	03/01/2012	0	1	0	1	100	View	View	Stopped

**Client Location Report**

Computer Name	Location	Reported By (logged in user)	Reported At	Computer Name	Location	Reported By (logged in user)	Reported At	Phone Number
TMLPC	Building 2, Room 210	Tim	2012/03/01 5:35 pm	TMLPC	Building 2, Room 210	Tim	2012/03/01 5:35 pm	ext 1234

Once the test is complete, the test reports are available indicating which PCs tested the panic button and which did not. The reports also lists any location changes that need to be made.