



Designed and Manufactured by  
**Micro  
Technology Services, Inc.**

# Facility wide Duress and Emergency Notification

## LynxGuide System Overview

### INPUTS

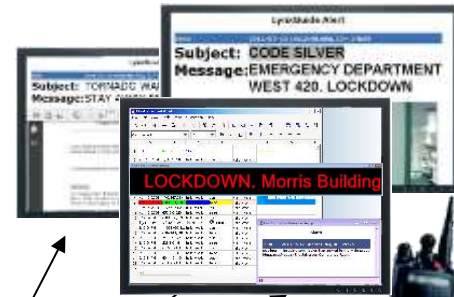


LynxGuide Software Inputs  
Optional Hardware Inputs  
LynxGuide Software Outputs  
Optional Hardware Outputs



LynxGuide Server

### OUTPUTS



[www.LynxGuide.com](http://www.LynxGuide.com)

# What is LynxGuide and where is it used

Lynx is an inside-network Duress and Mass Notification System developed and supported in Richardson Texas

Lynx was developed to address the issue of making it more cost effective to install panic buttons and improve group and mass communication in large facilities or groups of facilities on the same network.

Lynx has 100,000s of panic buttons in use; from software only to combinations of all of the available devices.

Lynx can be as simple as software based alarms sending to software devices. PC alarms communicating with others PCs as a LynxMessenger "Popup", Text to phones and pagers, Email, RSS feed, SMTP.

Lynx is easy to expand over time – Add hardware inputs to tie into existing alarms, USB panic buttons or wireless. Output to 10 digit phone numbers, Mass SMS, Radios, PA systems, Strobes, LED signs.

Lynx can be an output to your CCURE access control system communicating events to Radios, PCs and other devices through the LYNX interface.

## **Applications:**

Lynx is used in Healthcare, Higher Education, K-12, City/County Government and any large facility that has concerns for workplace violence or a need to notify employees of critical issues.

Used for Work Place Violence, Domestic Violence. High Risk areas such as Human Resources, Lobbies, Behavioral Health, Emergency Departments, Administrative areas.

Group and Mass Notification for Code Alerts, "The Joint Commission has arrived", Severe Weather, etc.

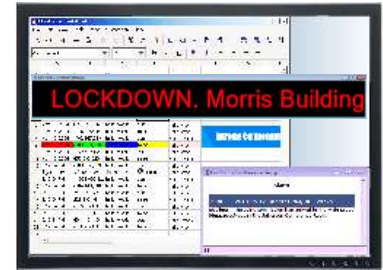
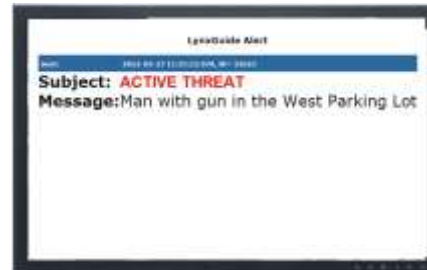
Tie into existing alarms to notify groups when an alarm has occurred - Temperature sensors, Equipment failure

# LynxGuide is a Network Based Duress and Mass Notification System

LynxGuide can address your duress and mass notification needs with software based inputs and outputs communicating via the LynxGuide server inside your network.



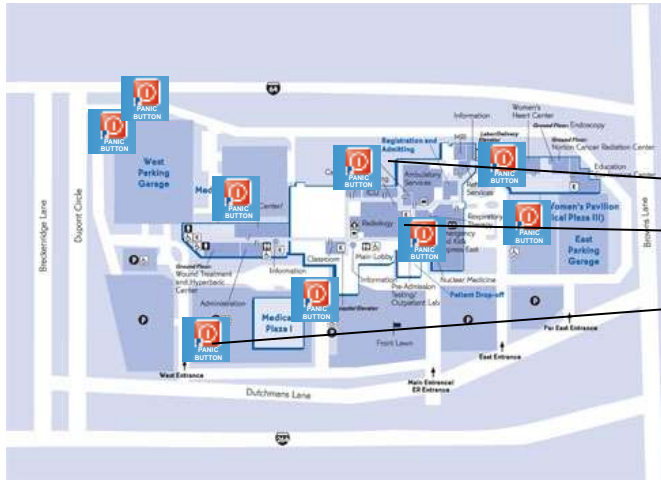
Software alarms can be:  
A Two-key keyboard combination  
A Desktop Icon that goes out automatically  
A Desktop Icon that you can add text to.



The LynxMessenger “Popup” can notify small group of PCs or Macs or 1,000s depending on the issue. The desk top icon alarms can be pre-configured with all of the text and possibly procedures to follow or set to a pending stage where additional information can be added. The Lynx-Messenger is set to “popup” over and above what the person is working on. The “Popup” can take over the whole screen, scroll in black and red text or take over just the corner.

# Input Software

## Lynx Desktop Icons



Many Locations to one



PCs with LynxMessenger Client  
Specific Message based on location

- Alarms are sent Instantly or with User verify
- Each alarm is specific to the activation location
- Predetermined or User added Alert Text
- Unlimited number of Desktop Icons
- Zero foot-print Icons can be emailed to employees
- Custom Icon Library can be uploaded
- Ideal for quick installations – Domestic Violence Concerns etc.

# Input Software

## LynxGuide Desktop Icons

Desktop Icons are ideal for group or mass notification. You can pre-configure icons with information as well as who (and how) needs to be notified. This makes it possible for a wider group of people to use the system and simplifies the process when needed.



One to many PCs



- Alarms are sent Instantly or with User verify
- Predetermined or User added Alert Text
- Unlimited number of Desktop Icons
- Keyboard "Hot Key" can be assigned to Icon
- Custom Icon Library can be uploaded
- Broadcast 1,000s of "popups" in under 1 minute

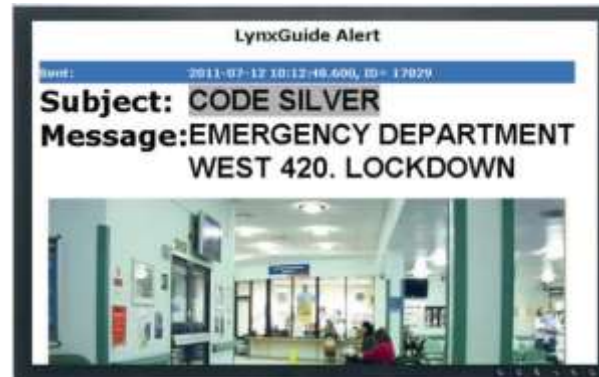
100s-10,000 PCs with LynxMessenger Client

# Input Software

## Lynx Keyboard Panic Alarms

### LynxKey

Operates with PCs Logged On



#### Features:

- Operates on Windows PC's
- Alarms are sent Instantly or with User verify
- Predetermined or User added Alert Text
- "Hot Key" combinations are user defined
- Extremely simple to operate
- Three alarm channels

### LynxKeyPro

Operates with PCs Logged On or Logged Off.

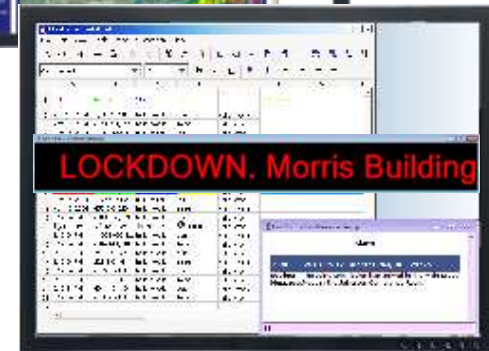
Test Feature enables employee to Test the 2 key combination alarm and creates test reports. It enables employee to confirm PC physical location. 20 two key combinations are available. The LynxGuide Server comes with 100, 200 or 400 Client seats depending on the server size. You may purchase additional LynxKeyPro Client seats. One Time Cost.

# Output Software LynxMessenger



The LynxMessenger client software is a simple-to-use instant messaging program. LynxMessenger client software simply needs to be installed on any Windows-based PC or Mac (individually or using an MSI push). Alerts can be sent to individuals or groups.

- Include JPG, BMP, PNG, GIF images
- Attach Documents: PDF files, Word documents, Excel spreadsheets
- Include live web sites for weather alerts or live video from IP Cameras (standard I Frame)
- Log files record all alarms and responses



# Lynx Alarm Outputs

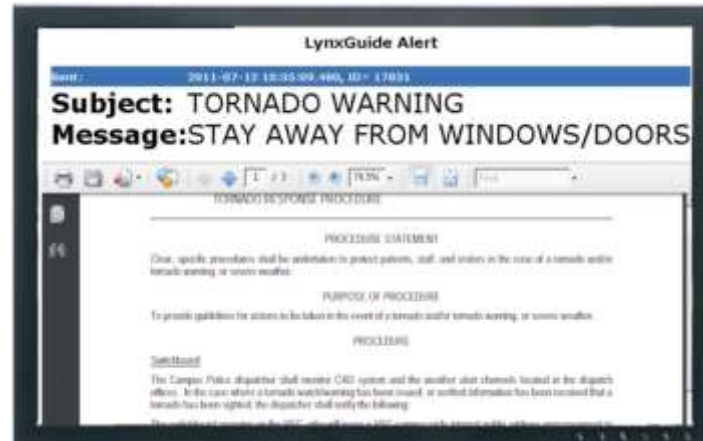
Lynx enables you to communicate to large numbers of PCs and Macs as well as group Text notification. You can also expand the system to Mass notify phones, activate strobes, LED signs as well as PA and Radio systems. Each alarm can be set up with specific groups of devices to be notified depending on the issue.



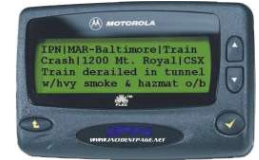
PA Systems



Strobes



Mass or Group LynxMessenger  
PC or Mac "Popups" Alerts



Text Pagers



IP or Conventional  
Telephones



Your Radios



LED sign



Cell Phones



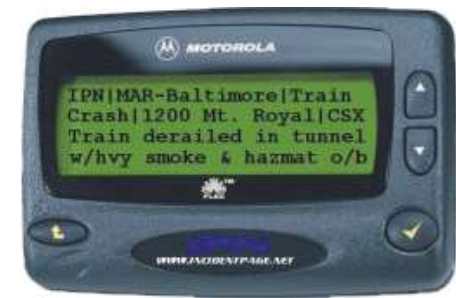
# Output SMS/Text Notification

## SMS

to group cell phones, such as Administration, Emergency response Teams. Code Alerts, such as “The Joint Commission is here”, Mass Notify to opt in groups.



Text via SNPP, SMTP In-house Text Pagers, 3<sup>rd</sup> Party text pagers or use SMTP to communicate to other existing systems.



Built in to the LynxGuide server software is the ability to send alarm output messages to groups of cell phones via SMS (includes 200/month with paid support), text pagers and PDAs via SMS text messaging or email.

For Mass Text Notification the Lynx system connects you to an optional high capacity SMS-PRO messaging platform.



Lynx also has a built in RSS server enabling both RSS feed inputs and output to devices that can accept an RSS feed.

## Optional Input Hardware

# LynxUSB – *USB Hardwired Panic Button*



**Ideal for quick installations**

- The LynxUSB Panic Button reduces the cost and time of installing a conventional panic button.
- Alerts are sent to the LynxGuide server even when the PC is logged off.
- Simply load the client software and install the LynxUSB panic button on the PC.
- Built in Monthly Test feature
- Available Momentary or Locking with a reset key



### **LynxNet-P Network Panic Button**

Also available, the LynxNetP allows you to install panic buttons anywhere there is a network connection even if there is NO computer

# Optional Input Hardware

## Wireless LynxWLS

Available Fixed or mobile with location



**Supervised**

A variety of wireless sensors



**Range**  
150-500 ft.

**Temperature, Door contacts, Universal**



**Wireless Receiver**



**Wall Mount or Outdoor**



**Repeater**

- 960 wireless inputs/channels
- Each alarm has a unique message
- 900 Mhz spread spectrum receiver
- 150 feet to 500 feet indoors
- **Fixed Location or Mobile with Location**
- Wireless Transmitter Supervision
- Low Battery Notification
- Transmitters battery life 2 to 3 years
- Connects directly to a network
- Supervised Repeaters available
- Requires Power and Network connection

# Optional Input Hardware

## LynxNet 4i LynxNet 128i



4i



128i

The LynxNet input devices are available in 1-128 input channels. This allows connection to existing devices that provide normally opened or normally closed contact outputs.

When activated, alarms are transmitted to the LynxGuide server. The LynxNet connects to new or existing sensors via your network to the LynxGuide server.

Take existing alarms and communicate through Lynx to Strobes, Lynx "Popups", Cell phones, Radios, PA system and more.

EOL (end of line) resistors provide wire integrity to devices and report any fault to the server supervision channel.

Logs all alarm data in the Lynx system

Requires power and a Network connection

**Available with 1, 4, 32, 64, 96, 128 Channels**

# Optional Input from C•CURE

## C•CURE Integration



**Communicate any C•CURE events to your existing Radios and other LYNX Output devices**

- ~ Verbal Messages to Existing Radios
- ~ Group/Broadcast SMS Text and Phones Calls
- Up to 10,000 PCs as a “Popup” Message
- ~ RSS Feed (Public Display Monitors)
- ~ Text Messages to 3rd Party Pagers (Via SNPP)



# Optional Output Hardware

## LynxStrobe and Visual Alerts

- Activate 4-Colored IP Strobes remotely over your network during an emergency.
- Activate via Desktop Icons or from hardware inputs via your LAN.
- Requires power and a Network connection



**Red – Lockdown**

**Yellow – Evacuate**

**Green – All Clear**

**Blue – Shelter in place**  
*Weather, etc.*

The Rugged steel construction and wall mountable design (vertical) make it ideal for lobbies, classrooms and other public areas.

**A variety of other visual and audible outputs are available**



# Optional Output Hardware

## LynxPA – PA system interface



### IP LynxPA System

Communicate to any PA system on your network with pre-recorded messages or text to speech with the click of an icon or input from any other Lynx hardware.

### Send verbal messages to your PA systems via the network

The network based LynxPA device outputs line level or up to 1/2 watt audio to your PA system. The LynxGuide server streams wave files or text to speech to the LynxPA when an alarm is activated. A sound card is required to be installed in the LynxGuide server to use the LynxPA. If you have more than one PA system a unique message can go out to each or all the same. You can have a tone occur then the verbal message. Requires power and a Network connection.

# Optional Output Hardware

## LynxDispatcher – *Radio System Interface*

**Send verbal messages to your existing Radio system via the network**



- The LynxDispatcher allows you to remotely activate verbal messages – prerecorded or text to speech to your existing radio system.
- It can be activated by duress alarm activation, Group or Mass notification for Code Alerts.
- Messages can be activated by any Lynx software or hardware alarm input.
- Works with any radios as you supply one yours for permanent integration.
- Requires power and a Network connection.

- AC powered
- 15 ft power cable
- Wall mounted
- Rugged Metal House
- 6 3/4"(W), 17 1/2" (w/o antenna) (H), 3" (D)
- Requires one of your hand held Radios to be permanently installed in to the LynxDispatcher



# The LynxGuide Server installs on your LAN

## 2,000 Client Servers



LynxGuide Dell PowerEdge R420

## 5,000 or 10,000 Client Servers



LynxGuide Dell PowerEdge R420

### Server Includes:

- Unlimited Desktop Icon alarms
- Available with 2,000, 5,000 or 10,000 client seats
- LynxMessenger “Popups” Alerts (counts as 1 seat)
- LynxKey - Keyboard alarm Logged on (counts as 1 seat)
- LynxKeyPro - Logged on or off alarms (counts as 1 seat)  
*The 2K server comes with 100 LynxKeyPro, The 5K comes with 200, The 10K comes with 400.  
Additional LynxKeyPro may be purchased for a one time fee.*
- 1 year of Technical support and updates (yearly support available after year one for a fee)
- Lynx System requires one server per Facility/Remote Locations

### Software Only

Available in 2,000, 5,000 or 10,000 client seats



Designed and Manufactured by  
**Micro  
Technology Services, Inc.**

## Facility wide Duress and Emergency Notification

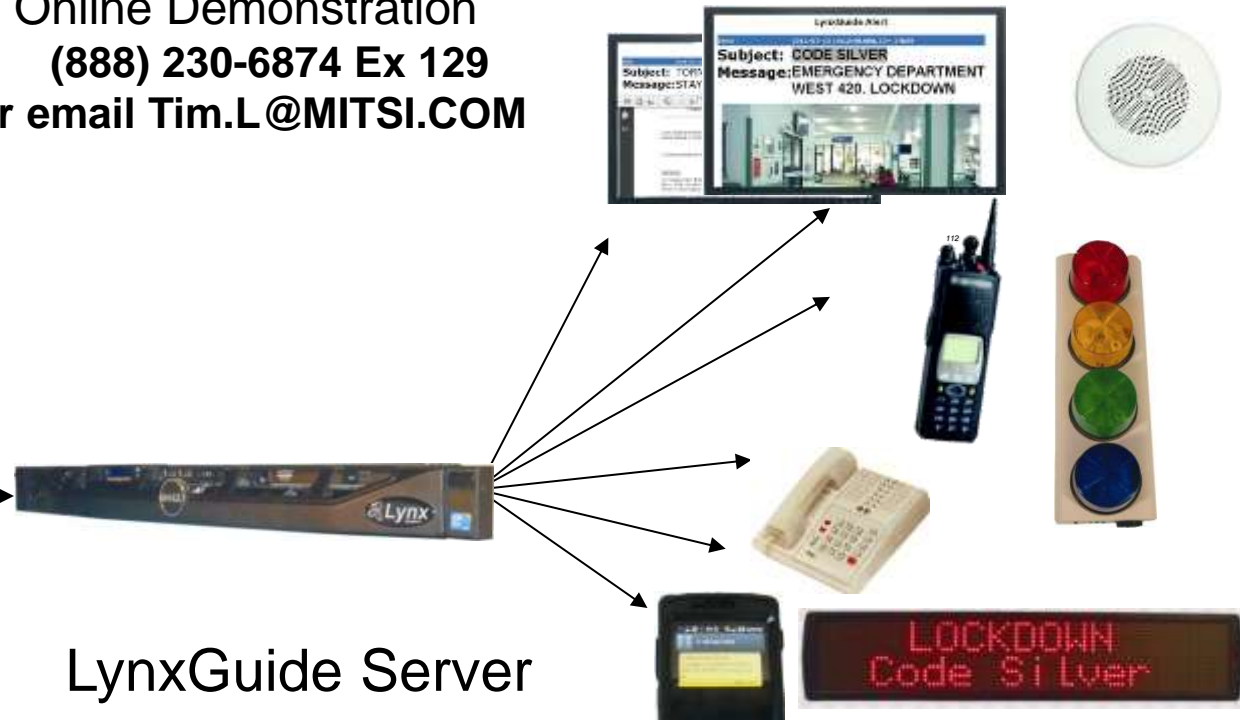
# For More Information

### INPUTS



Online Demonstration  
**(888) 230-6874 Ex 129**  
Or email [Tim.L@MITSI.COM](mailto:Tim.L@MITSI.COM)

### OUTPUTS



LynxGuide Server

**(888) 230-6874 Ex 129 [www.LynxGuide.com](http://www.LynxGuide.com)**