

## Wireless Fixed or Mobile Panic/Duress with Location

The **Lynx-WLS** - the next generation Wireless Locating System can integrate with the LynxGuide server or operate as a stand alone non-network system (The Monitor Below). When a wireless duress button is activated, a signal is sent to the Lynx-WLS using a 900 Mhz repeater network. Does not reside on your existing wireless network. The Lynx-WLS is able to triangulate the location of the wireless button using the repeater network data and sends the location information with the alarm to the LynxGuide server via the LAN. The wireless alarms can also be installed in fixed locations with the pre-determined location. Up to 960 unique devices can be installed.



Lynx-WLS

Compact wireless duress buttons with belt clip. Ideal for duress or patient assist.

Low Voltage Repeater for locating or extending range. Simple to install.

**900 Mhz Spread Spectrum Technology, not WiFi 802.11.**

- Fixed Wireless Duress Alarms - with alarm location.
  - Mobile Wireless Duress Alarms - with alarm location.
- Combine both Fixed and Mobile alarms in one area**

### LYNX-WLS-3 Wireless Locating System for Fixed or Mobile devices

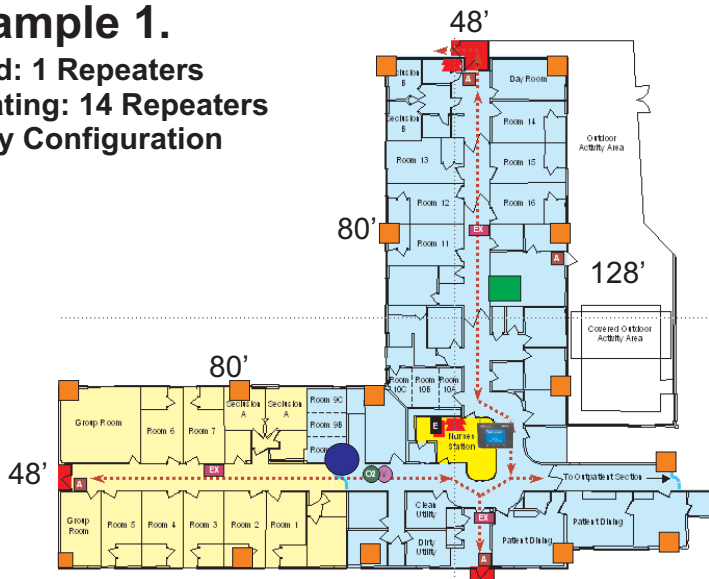
The Lynx-WLS connects to a network connection and power. The wireless duress buttons are pre-programmed to the Lynx-WLS either for fixed or mobile use applications. For Fixed applications a repeater is only needed approximately every 10,000 square feet, based on building structure. For Mobile locating applications a repeater is needed approximately every 1,500 to 2,000 square feet, based on building structure. See example diagrams below. The Locating system requires a Lynx Technician onsite to configure the system after the Lynx-WLS and repeater network are installed.

### “CODE GRAY: Mary Smith Behavioral Health Near Room 520”

Now when a mobile button is pressed the alarm goes out to PCs, Radios, Pagers with the actual location. With fixed location alarms the Building, Room, Name of the person and other information can be included

#### Example 1.

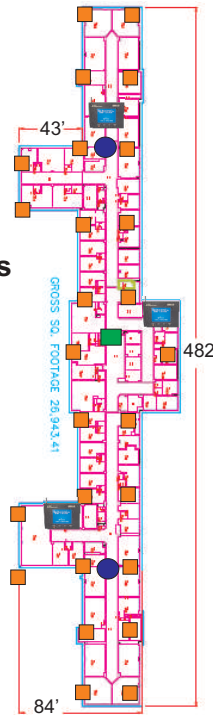
**Fixed: 1 Repeaters**  
**Locating: 14 Repeaters**  
**2 Day Configuration**



#### Example 2.

**Fixed: 2 Repeaters**  
**Locating: 26 Repeaters**  
**3 Day Configuration**

- Repeater for Locating Buttons
- Repeater for Fixed Buttons
- WLS Wireless Receiver
- 8" Wireless Alarm Monitors



**Onsite Wireless Configuration is required for the Locating system once you have installed the hardware. The Cost varies depending on the size of the implementation**

The Lynx-WLS Mobile solution gives you the ability to have mobile wireless panic buttons in high risk areas that can locate the employee down to 5-8 feet. The notification is the fastest in the industry to response teams via computers, radios and other mobile device. The Lynx wireless mobile solution users wireless 900 Mhz repeaters (14VAC) to locate to the alarm location. The repeaters are required every 40/50 feet in every direction. Add the standalone MONITOR(s) for off line notification within the wireless area.

# LYNX-WLS Wireless Alarm and Repeater Options

## Wireless supervised alarms are pre-configured to the Lynx-WLS

**Fully Supervised . Low Battery Notification . Battery Life 1-3 years**

Each wireless device has a unique channel (up to 960) allowing a specific alarm message (Building, Room, Person and other details). The alarm message, based on the channel number, can go to specific groups.



### LYNX-WLT-PANIC-A

Simple, single-button activation pendant. Comes with a belt clip or can be easily mounted under a desk. Push and hold. Fixed buttons have room location.



### LYNX-WLT-PANIC-B

Two-button activation, one channel pendant. Comes with a belt clip or can be easily mounted under a desk. Push and hold. Fixed buttons have can have exact room location.



### LYNX-WLR-INDOOR

Indoor Repeater required for Locating system or increases the range of fixed transmitters. **Supervised** by the Lynx-WLS Low voltage w/Battery backup Dims: 6.5" x 3.5" x 1"



### LYNX WLR-OUTDOOR

Outdoor Repeater for expanded coverage or for location. **Supervised** by the Lynx-WLS. Low Voltage w/Battery backup. Dims: 7" x 7" x 3"



**LYNX-WLT-IDPNC-3** The momentary (not push and hold) HUB Wireless Duress alarm is a supervised universal transmitter with a 6" wire connected to a HUB duress button. It is totally standalone battery powered.

**LYNX-WLT-IDPC-4** Locking



**LYNX-WLT-BILL -0** Wireless 900 Mhz Bill Trap with its 900MHz Frequency Agile radio technology allows the unit to be fully supervised even in a metal cash drawer.



### Other Wireless Transmitters

LYNX-WLT-PIR-1 ASYM,LYNX,WLT,PIR  
LYNX-WLT-DOOR-1 ASYM,LYNX,WLT,DOOR  
LYNX-WLT-UNIV-1 ASYM,LYNX,WLT,UNIVERSAL

## Wireless Indoor Wall Mounted Buttons Ideal for Codes.

**"CODE SILVER" in Emergency Departments, Classrooms, Corridors.**



**LYNX-WLT-IDPNC-2** The simple to install indoor wall mounted wireless button has a clear cover. Custom text and color based on your application. It instantly sends a wireless alert to the Lynx-WLS receiver.

**Available hardwired for Lynx input boxes**  
**Avail: Yellow, Blue, Red, White, Green**  
**Dims: 8.5" (H), 5.5" (W), 4.5" (D) 3lbs.**



**LYNX-WLT-IDPNC-1** The indoor wall mounted wireless button is available without a cover. The text is customized based on your application. It instantly sends a wireless alert to the Lynx-WLS receiver. **Available hardwired.**  
**Avail: Yellow, Blue, Red, White, Green**  
**Dims: 5" (H), 4.5" (W), 3.3" (D) 1lbs.**

## Wireless Outdoor Pole or Wall Mount Fixed Position Buttons



The **LYNX-WLT-ODPNC-3** battery powered, large, visible outdoor wireless Panic Box - Ideal for parking lots, garages and remote areas. Includes Enclosure Mounting Backplate, Pole Mounting Bracket w/Fasteners, Wall Mount Clips, Aluminum Powder-Coated, Weatherproof Red Panic Button.  
**Dimensions: 12"(H), 10"(W), 6"(D)**



### LYNX-WLT-ODPNC-1

The outdoor, rugged wall mounted wireless button is designed for harsh environments. It instantly sends a wireless alert to the Lynx-WLS receiver.  
**Avail: Gray**  
**Dimensions: 5"(H), 4"(W), 3"(D)**



### LYNX-MON-0 ASYM,LYNX,MONITOR

The Wireless Monitor was designed to operate either as a standalone wireless solution or as part of the Lynx system. It is ideal for locations such as Clinics and off sites that need to receive local alarms and either need a standalone system or be part of the larger LYNX network solution. The Monitor simply needs to be within the wireless coverage area. Up to 8 Monitors may be used with one Lynx-WLS receiver.

**Network Duress and Emergency Notification Systems**

Contact (888) 230-6874 Ext 129 [TIM.LEE@MITSU.COM](mailto:TIM.LEE@MITSU.COM) [WWW.LYNXGUIDE.COM](http://WWW.LYNXGUIDE.COM)